

International AEWA Single Species Action – Planning Workshop for the management for
the Taiga Bean Goose *Anser f. fabalis*

Taiga Bean Goose in Latvia

Jānis Vīksne

Institute of Biology, Latvia

Photo: Kārlis Millers

Population and trends

- Bean Goose in Latvia occurs as passage migrant and staging bird. Numbers not known. In 1960 – 1970s Bean Goose was the most numerous geese species, recently it is less numerous than White-fronted Goose.
- There were no special studies of subspecies proportions but recently analysis of recoveries of birds ringed in The Netherlands and birdwatcher observations allows to suppose that *rossicus* is growing and now is more numerous than *fabalis*.

Geese hunting in Latvia

- * **Allowed species:**

Bean Goose *Anser fabalis*

White-fronted Goose *Anser albifrons*

Grey-lag Goose *Anser anser*: since 2008

Canada Goose *Branta canadensis*: since 2008

- * **Open season:** September 15 – November 30 (spring shooting (arrival – May 10) was closed in mid-1980s)

- * **Conservation measures:** areas closed for waterfowl hunting on big lakes Lubāns, Babīte, Engure, Liepāja, Pape, National parks Gauja (incl. Bog Sudas), Slītere (incl. Bog Bažu), Ķemeri (incl. L.Kanieris and bog Ķemeru Tīrelis), Nature Reserve Teiči (bog), etc.

Official hunting bag statistics

NB! Incomplete, deals with «geese» (without species or subspecies)

1967	1973	1992	1996	1997	1999	2000	2001	2002
490	900	615	940	1515	1076	1409	1893	1251

2004	2005	2006	2007	2008	2009	2010	2011	2012
388	599	558	987	2239	2001	1143	1482	1939

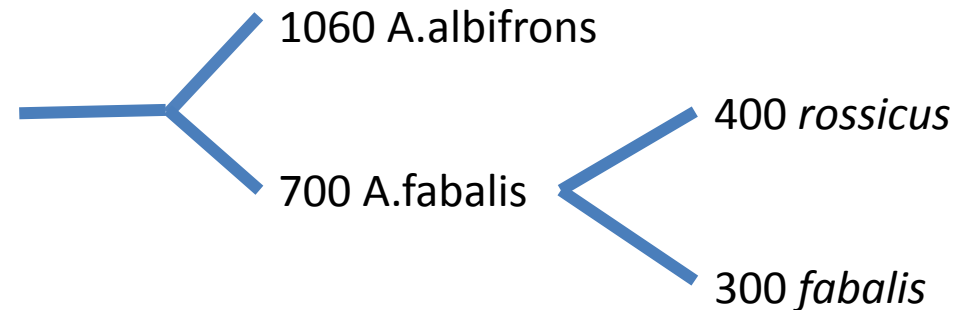
Approximate species proportion:

White-fronted Goose – 60%

Bean Goose – 40%

1760

Average geese
bag 2008-12





Thanks for attention!

Anser fabalis rossicus

Photo: Jānis Jansons